

Triangle

FEBRUARY / MARCH 2017

HOME

DESIGN & DECOR





Lane Venture "Mimi" Collection by Celerie Kemble shown in Sunbrella's "Armada," "Hollis," and "Scene" fabrics all in Cilantro green.

THE GREEN LIGHT

By Ashley Hotham Cox

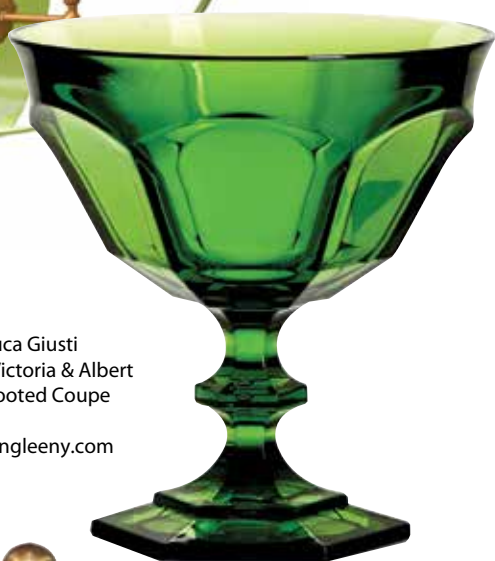
Taking cues from nature's lush foliage and vegetation, Pantone announces Greenery as its selection for Color of the Year.

At the precipice of spring, where flora is brought back to life after the deadened winter, greenery is reintroduced into the landscape. A source of energy and rejuvenation, this vibrant and happy hue evokes a breath of fresh life into your home. From textiles and tableware to lighting and accessories,

this zesty yellow-green shade reinvigorates the senses and gives your interiors a refreshing new look for the new year. Like Gatsby's green light at the end of his beloved Daisy's dock, this year's hue offers hope and optimism that will transcend the seasons.



Oomph "Cambridge III"
Armillary Sphere in Parakeet
\$2,495
www.oomphonline.com



Mario Luca Giusti
Acrylic Victoria & Albert
Green Footed Coupe
\$22
www.jungleeny.com



Clockwise from top left:

"O7797005 Tennis" in Anis by Pierre Frey (www.pierrefrey.com)

"15509" in Lime by Duralee (www.duralee.com)

"Serengeti" in Green by Thibaut (www.karensaks.com)

"Beaded Batik" in Lime by Kendall Wilkinson for Fabricut (www.fabricut.com)

"Shimmer" in color 01 by Matthew Williamson for Osborne & Little
(www.osborneandlittle.com)

"Posie Dot" in Picnic Green by Kate Spade for Kravet (www.karensaks.com)

Dana Gibson Ginger Jar
in Green Bargello
\$225
www.danagibson.com



Stray Dog Designs "Nick" Console in Douglas Fir
\$1,200
www.straydogdesigns.com